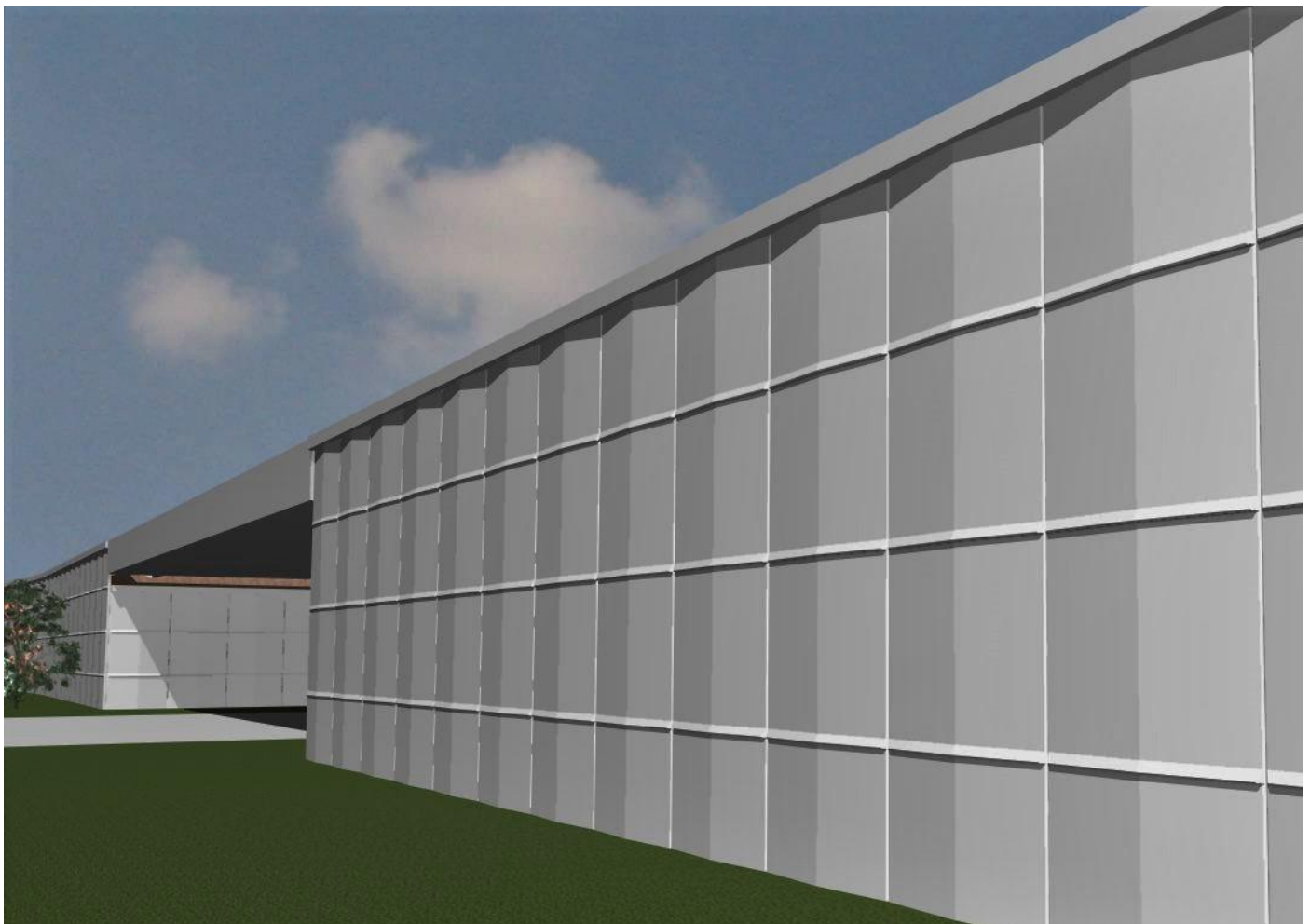




EVERGREEN

PILLAR MAXI WALL

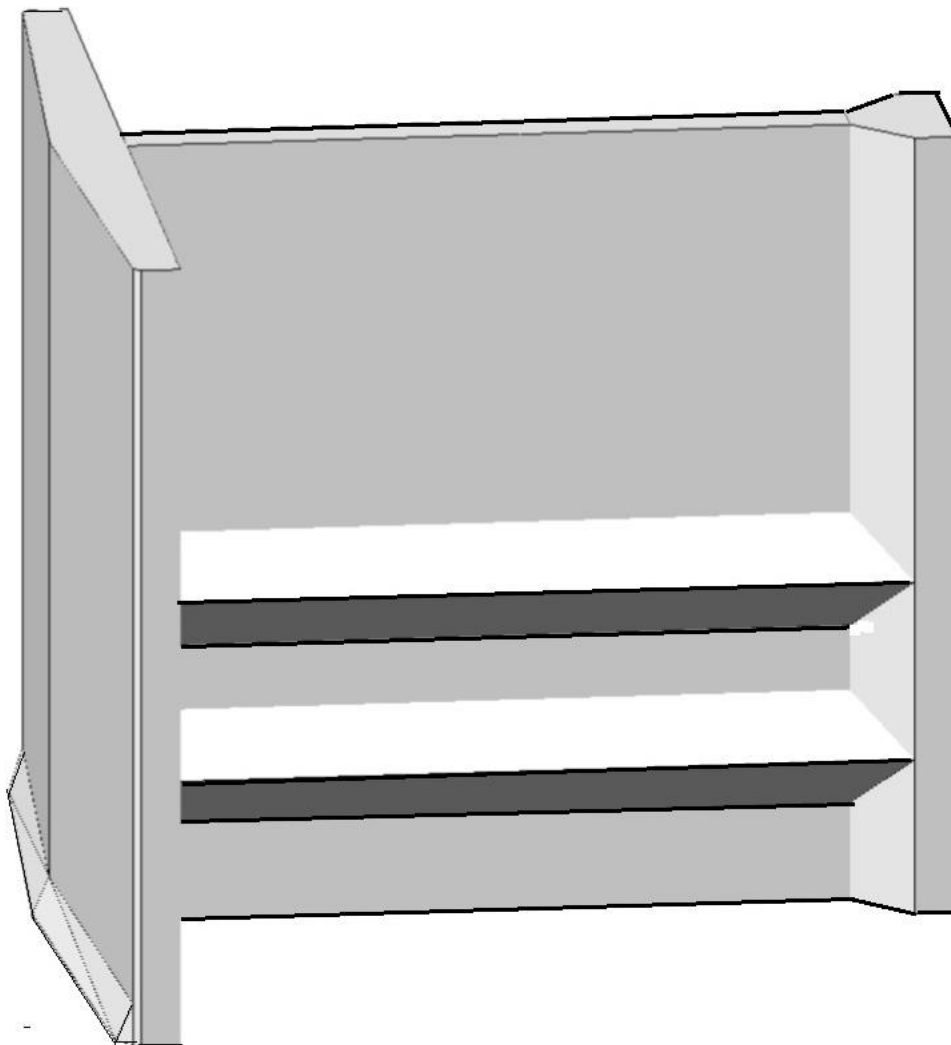
**An economical, heavy duty retaining wall and bridge abutment
10-years experiences applied to upgrade to MAXI PILLAR WALL!**



Special Features

Pleasing architectural finishes and durable 5000 psi concrete
Every unit 80 sf of wall face, high rate of sf per day, less labor. Less cost
Self-aligning keys ensure fast and accurate assembly and fewer parts

Backfill using on-site materials often, reduces material and transport costs
Wide open area between stems allows direct discharge of backfill
Wide open space also allows use of high output roller compactor
Element weight and keyways hold position during compaction process



Front Panels: 10 ft., 3.05 m wide x 8 ft., 2.44m high = 80 sf, 7.43 m²

The Pillar Winner Wall: a smart pillar with an appealing front architecture and stiffening shelves and a giant front panel for efficiency

Better Engineering: More Features Newest Cutting-Edge Technology:

- **Pillars induce soil arching within compacted backfill:** → **smart function**
- **Wide stem bottom extends strong soil arching:** → **superior stability**
- **Locked in fill compacted backfill adds mass/weight:** → **stronger wall**
- **Heavy weight units, with self-aligning keys:** → **will not shift**
- **Big 80 s.f. face area drastically cuts crane-time:** → **easier work**

- **Wide open area between stems:** → **effective rollers, fewer lifts**
- **Earthquake and settlement resistant capacity** → **resolves new tasks**
- **Standard weight range 6 to 11 tons** → **a few units build a wall**



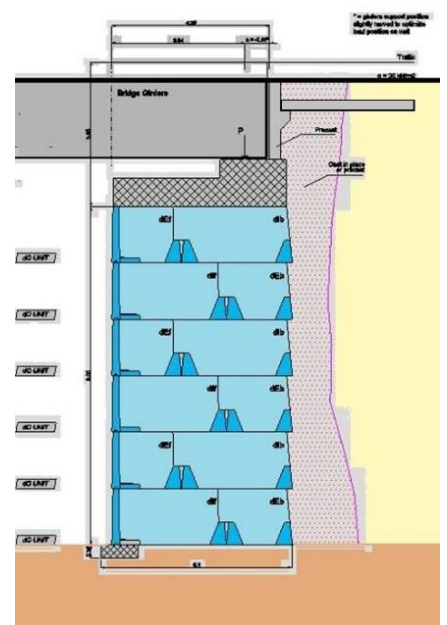
PILLAR MAXI WALL – The heavy duty retaining wall



Gravity frame MAXI WALL built for BNSF in Olathe, Kansas, the flagship of MAXI PILLAR wall



Bridge sits on separate pillars



Bridge sits directly on MAXI WALL

MAXI Wall forerunner for all 26 Overpasses for Saudi Arabia Railway
26 overpasses across 373 miles of rails for two, four, and six lanes highways,
4'876 units, walls 43 ft. high, wall face 44'163 m2, 475'363 s.f. a GIANT PROJECT



MAXI PILLAR WALL System

- **Excellent for heavy railways bridge abutments**
- **Superb economy for cut slope walls, shoring, and waterfront walls**
- **Efficient manufacturing: one type of mold for all – cast 2-3 units a day**
- **Super effective installation: installs fast: twice the wall face per day**
- **Great architectural pattern: pleasing to the eye with logical engineering**

Patent issued, patents pending in USA, Canada, trademark pending, copyrights©2017, all rights reserved



Evergreen Walls, Inc. 6069 Oakbrook Parkway, Norcross, Georgia 30093 US
Clay Warner, Evergreen Representative for US and Canada, cell 404 372 5476
Internat.: Geissbergstrasse 46, 5408 Ennetbaden, Switzerland, Cell +4179 356 0081
www.evergreen-walls.com, felix.jaeklin@evergreen-walls.com